

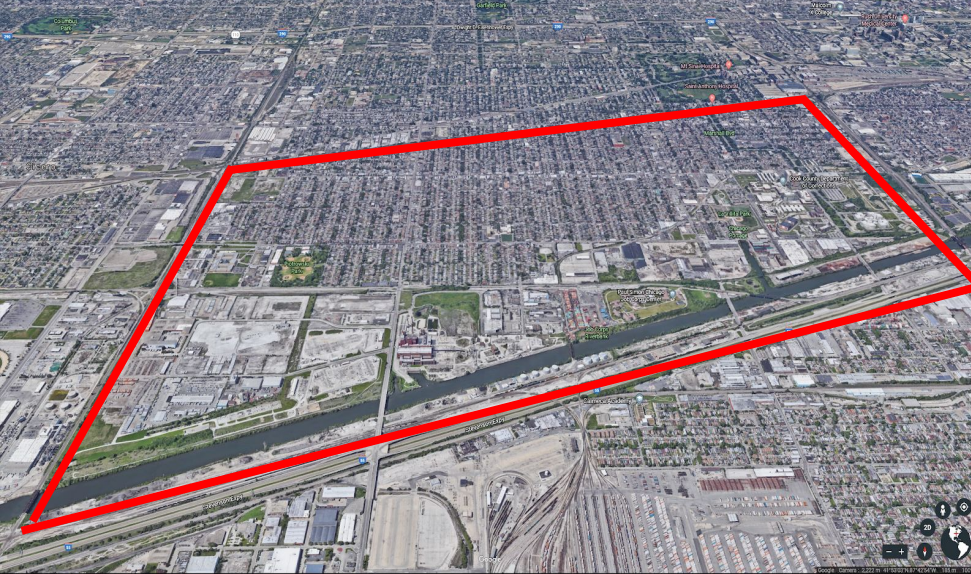
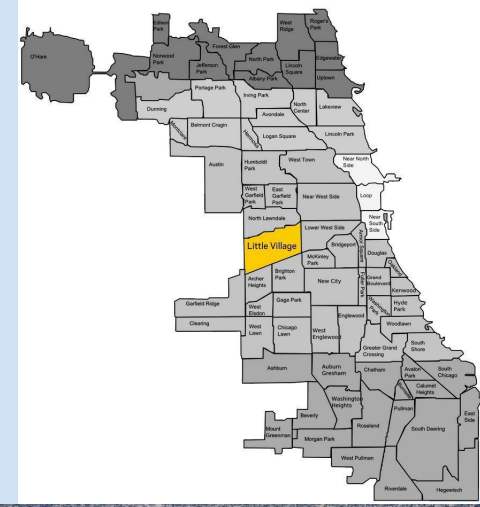
Air Pollution in Chicago and the Fight for Environmental Justice

An aerial photograph of a large industrial and transportation facility in Chicago. The foreground and middle ground are dominated by a massive yard filled with thousands of shipping containers, organized in neat rows. To the left, several parallel rail tracks run through the facility. The background shows a dense residential neighborhood with houses and trees, illustrating the proximity of industrial activity to urban areas. The sky is clear, and the overall scene depicts a major hub of logistics and freight.

José Miguel Acosta Córdova
Senior Transportation Policy Analyst
Little Village Environmental Justice Organization (LVEJO)
Ph.D. Candidate, Geography and GIS, University of Illinois

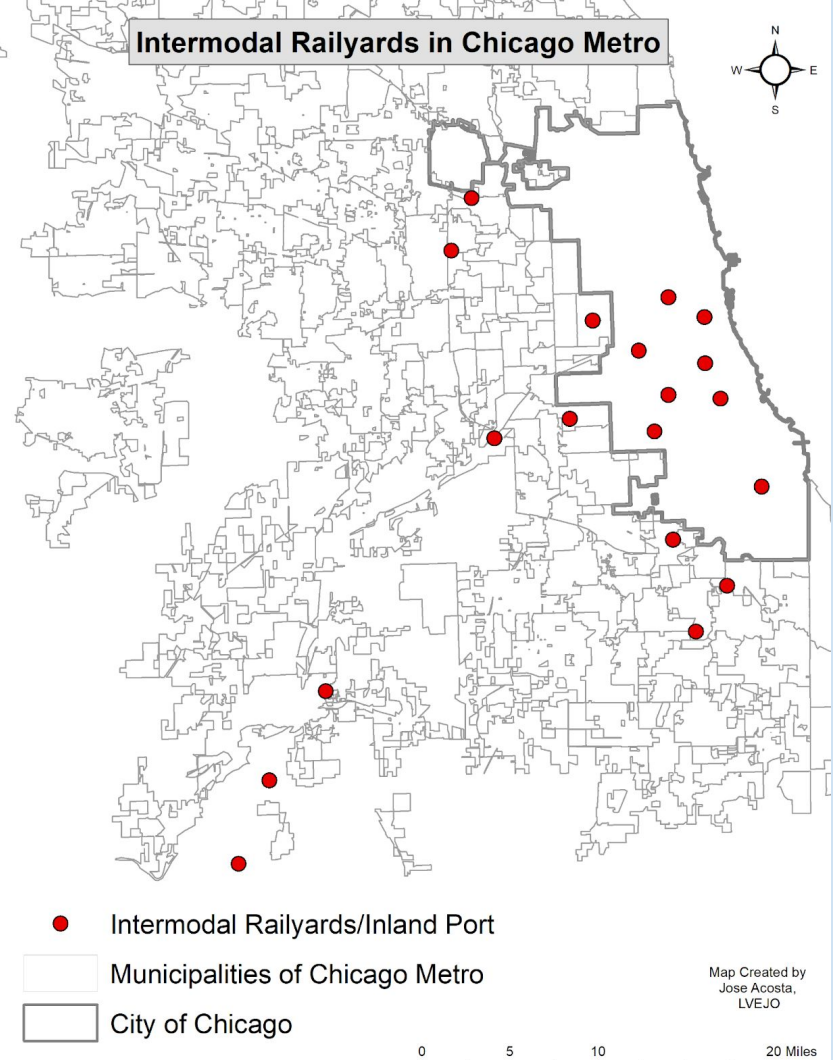


- 81% Latino, largest Mexican community in Midwest
- EJ community - 53% of land dedicated to industry
- LVEJO formed in 1994 to fight for EJ and Just Transition
- Now the largest EJ org in Midwest
- One of the most densely populated neighborhoods in Chicago - 27k people p/sq mi when accounting for non-industrial land
- Least amount of green space per capita
- Some of the highest asthma & obesity rates in city

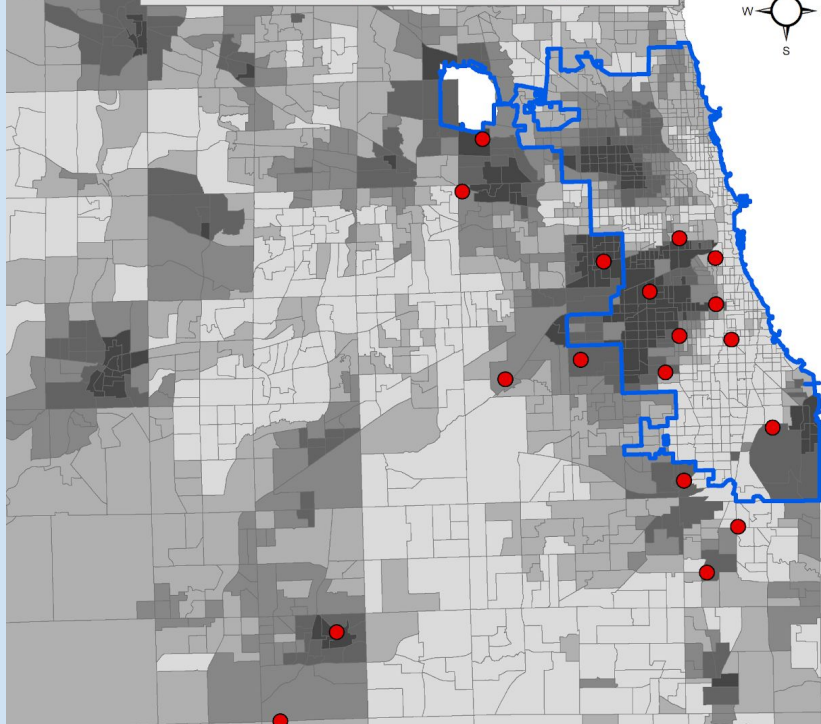


The Inland Port City

- Over 17.9 million TEUs in 2018, 16.5 million in 2022
- Second busiest port city in U.S., 10th largest in the world
- 19 intermodals/inland ports in Chicago region
- 8 within city limits
- Chicago's most direct connection to global trade
- Primarily located in low income and communities of color
- Other TDL facilities concentrate nearby
- Lack of oversight



Intermodal Railyards in Chicago Metro

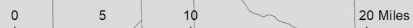


● Intermodal Railyards/Inland Port
▭ City of Chicago

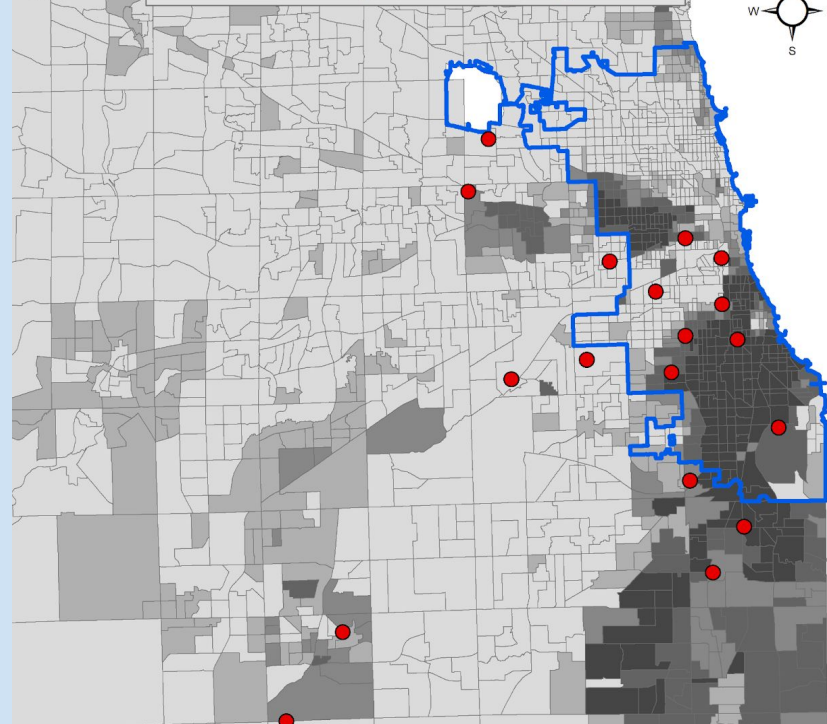
Total Percentage Latino/a/x

0% - 8.92%
8.93% - 21.1%
21.11% - 39.8%
39.81% - 65.91%
65.92% - 97.84%

Map Created by
Jose Acosta,
LVEJO



Intermodal Railyards in Chicago Metro

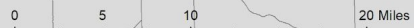


● Intermodal Railyards/Inland Port
▭ City of Chicago

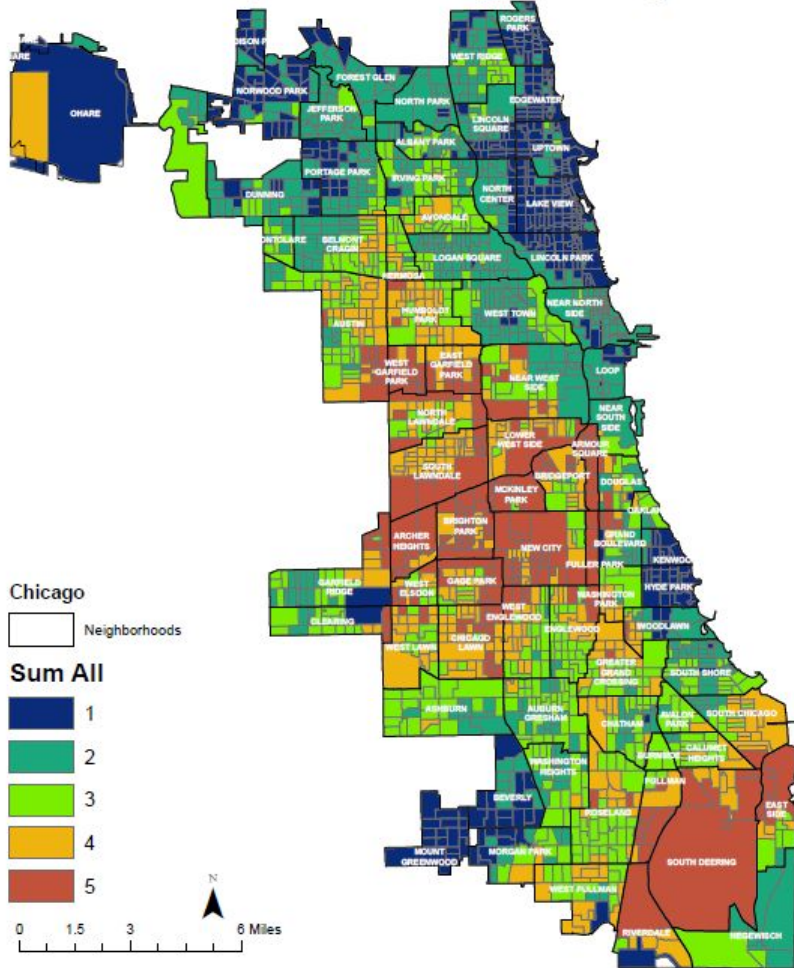
Total % African American

0% - 8.26%
8.27% - 24.25%
24.26% - 49.7%
49.71% - 77.56%
77.57% - 97.39%

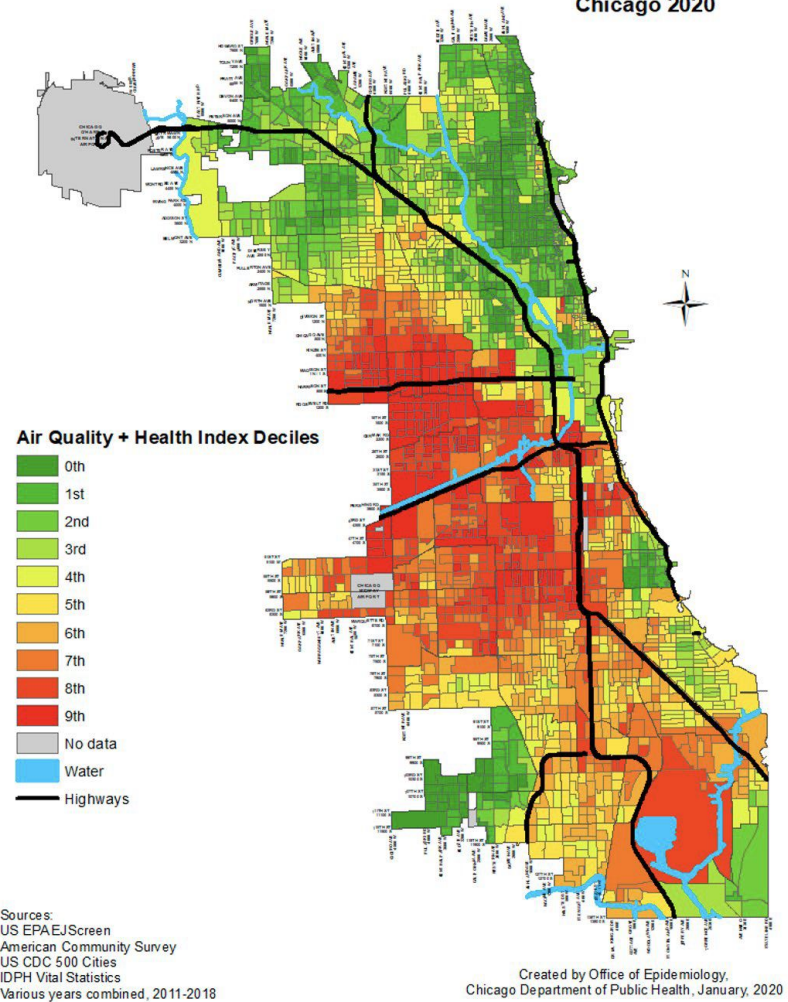
Map Created by
Jose Acosta,
LVEJO



Quantile Score for Demographics, Environment, Health, and Trucking in Chicago



Air Quality and Health Index, Chicago 2020



There are Policy Solutions

- **Advanced Clean Truck Rule**
 - a manufacturers ZEV sales requirement and a one-time reporting requirement for large entities and fleets
- **Low-NOx Heavy Duty Omnibus Rule**
 - lower oxides of nitrogen and particulate matter emissions for new trucks built
- **Indirect Source Rule**
 - intended to reduce heavy-duty vehicle emissions in the vicinity of warehouses -> applies to warehouses with at least 100,000 sq ft of floor space
- **Port/Freight Authority**
 - Regulatory entity needed to regulate freight in Northeastern Illinois
 - Combo of traditional port authority and an air quality board



NEIGHBORS FOR AN
EQUITABLE TRANSITION TO

**ZERO -
EMISSION**



**Regarding Mobility & Clean Transportation, to
achieve Greater Chicago's Carbon & Equity goals, a
critical obstacle to collectively overcome in 12
months is:
a just transition for clean freight**

