



ABOUT CNT

- CNT is a national hub for research, strategies and solutions to help cities use resources more efficiently and equitably.
- We believe solving problems like poverty, climate change and urban sprawl starts with making neighborhoods, cities and regions work better.
- All of our solutions are built on robust data-driven analysis.



MARKET

Why transit-oriented development?



**Reduced
transit times**



**Alternative
transportation
opportunities**



**Increased
housing stock**



**Environmental
benefits**



**Spurred
economic
activity**



**Public health
benefits**

Why **equitable** transit-oriented development?

Reduced transit times



Alternative transportation opportunities



Environmental benefits



Public benefits

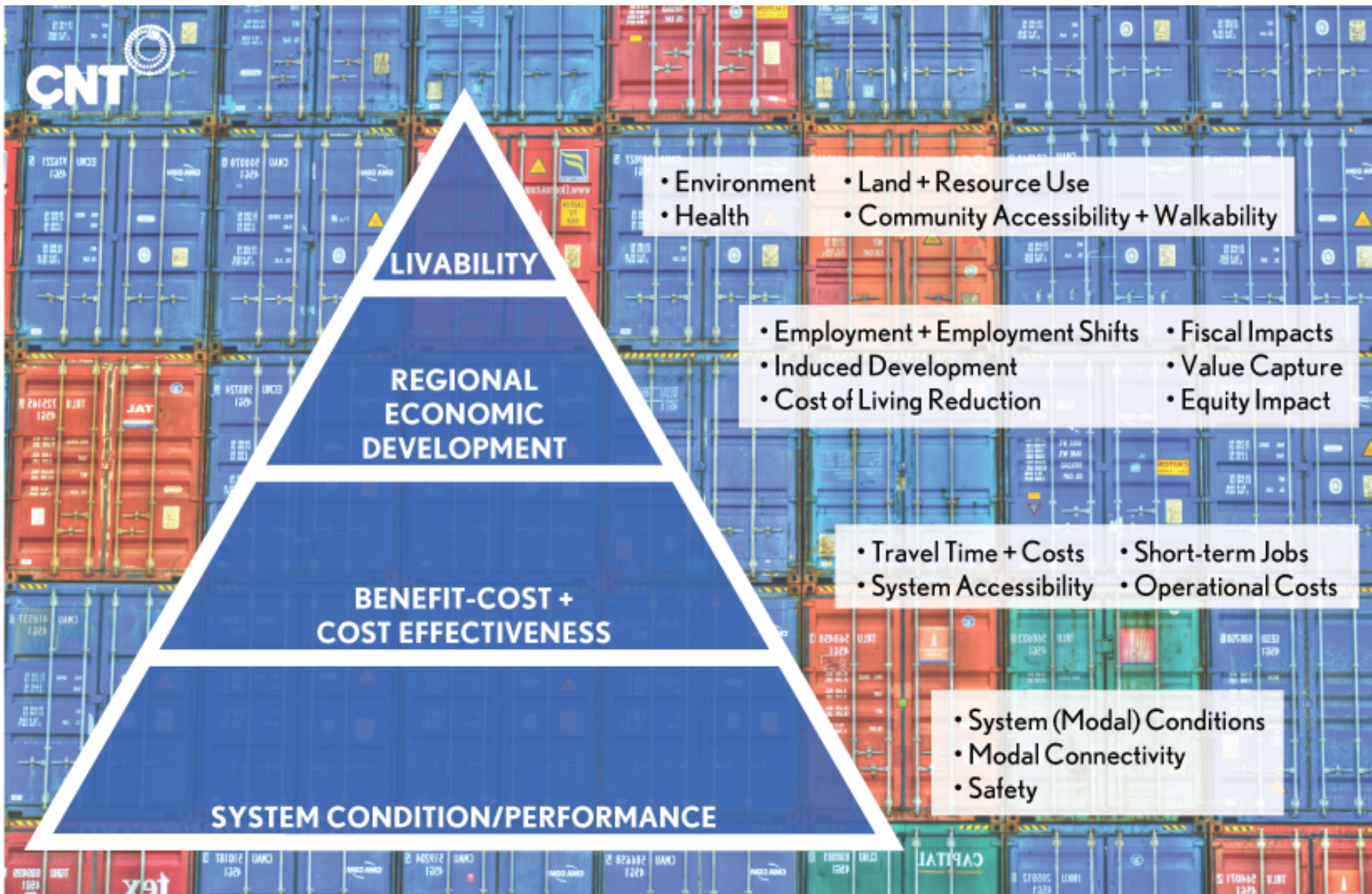


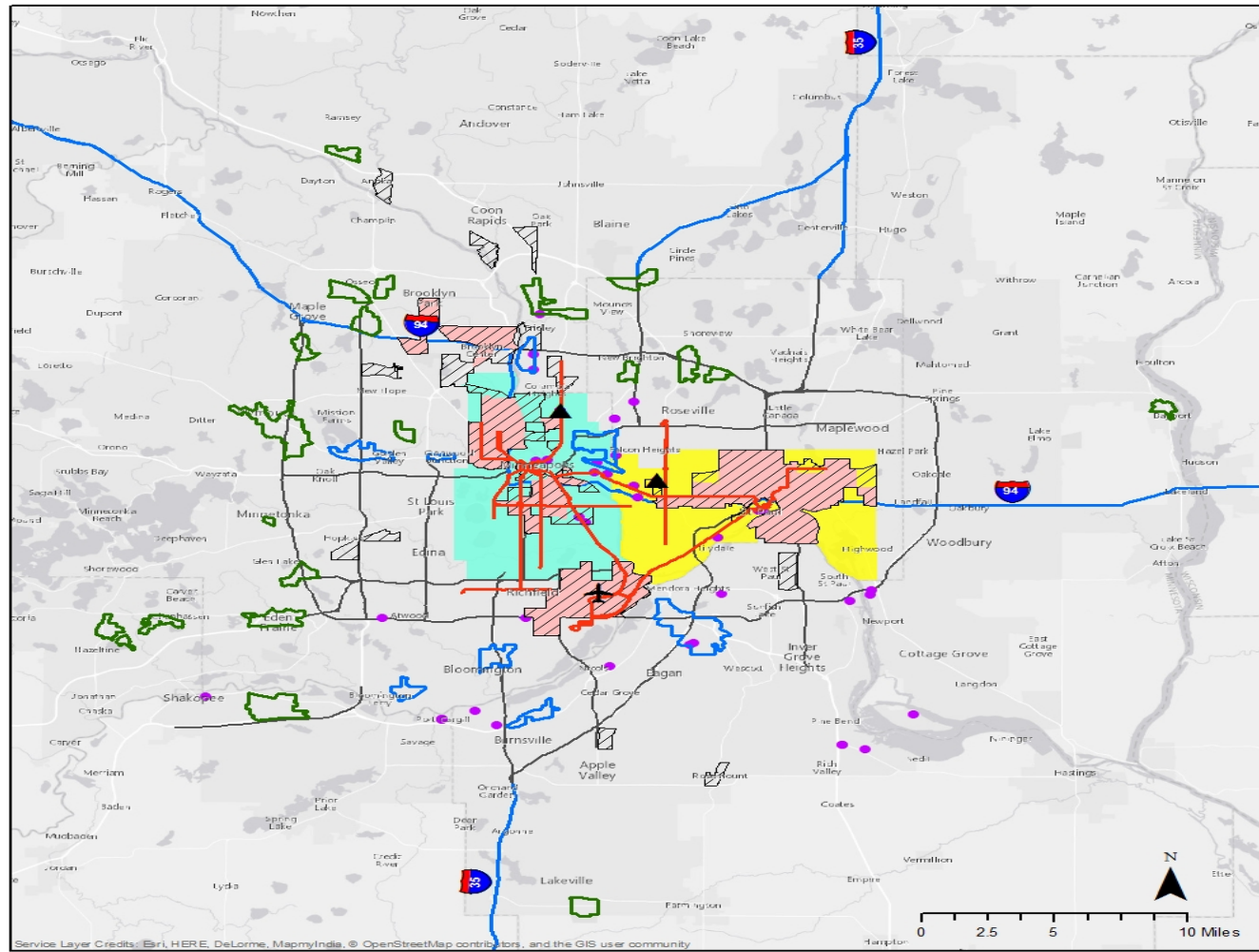
Say no to gentrification!

THE RENT IS TOO DAMN HIGH!

Cargo-Oriented Development (COD)

A form of development that integrates freight system efficiency with the development of manufacturing and logistics businesses in ways that benefit local economies, the environment, and public safety





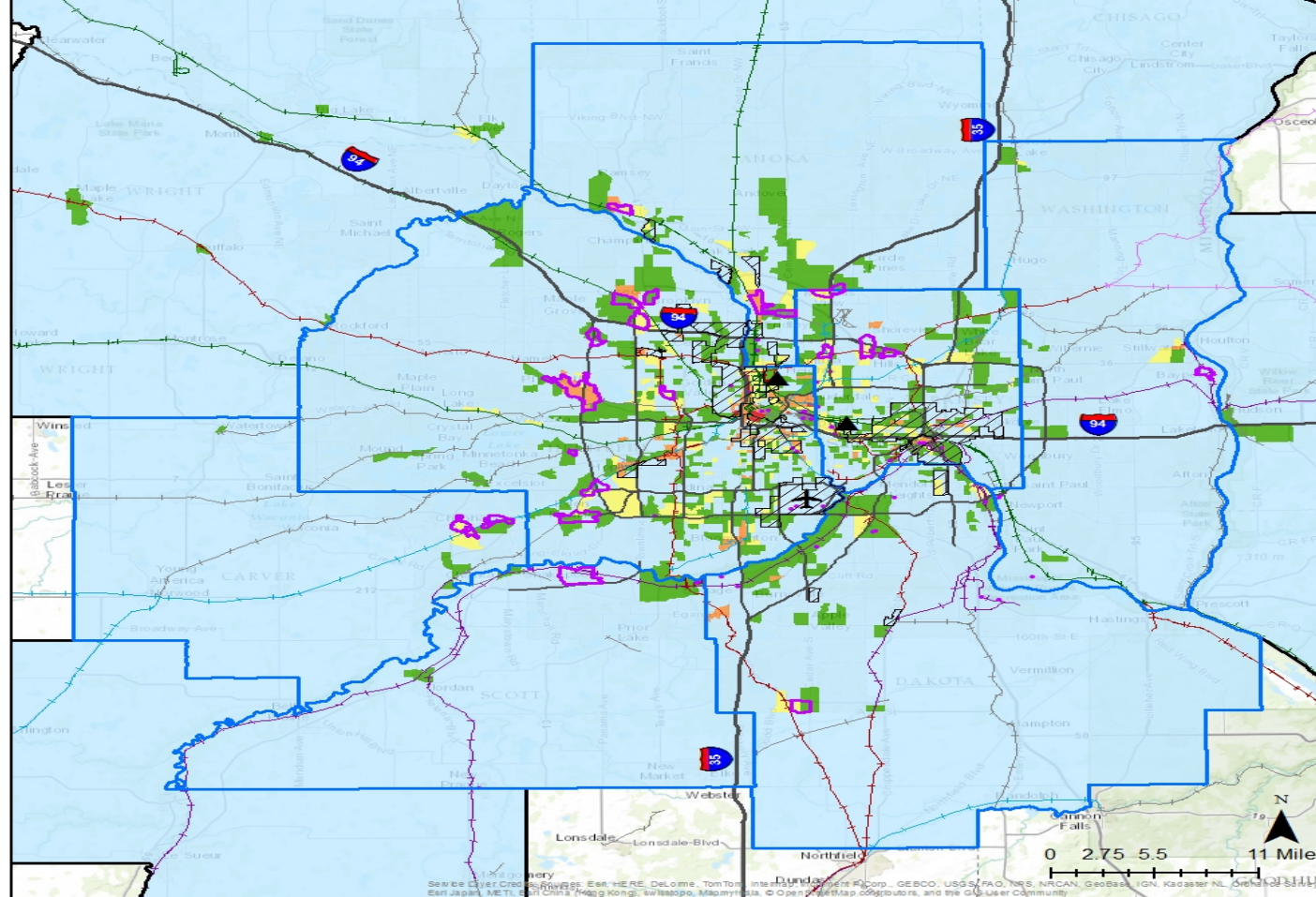
Legend

- Manufacturing Job And Activity Centers, 2016
- Industrial Job And Activity Centers, 2010
- Areas Of Concentrated Poverty, ACS 2014
- Areas Of Concentrated Poverty - 50% minority
- High Frequency Transit Network
- Minneapolis
- Saint Paul
- Intermodal Terminals
- Airport
- Freight Transfer Facility
- USA Major Highways

*Industrial Centers & Poverty Concentration Data are from the Metropolitan Council



Areas of Concentrated Poverty and Industrial Employment Centers



Legend

- | | | | |
|--|--|--|--|
| <p>Manufacturing businesses per square mile</p> <ul style="list-style-type: none"> 0 - 5 6 - 14 15 - 29 30 - 66 67 - 146 | <p>Raillines by Ownership</p> <ul style="list-style-type: none"> BNSF CN CPRS UP Short Line RR Others | <ul style="list-style-type: none"> Areas Of Concentrated Poverty, ACS 2014 Manufacturing Job Centers Intermodal Terminals Freight Transfer Facility Airport | <ul style="list-style-type: none"> USA Major Highways CBSA Counties in MPO area |
|--|--|--|--|



Manufacturing Businesses and Areas of Concentrated Poverty

**The critical challenge I focus on regarding
Mobility & Transportation related to Chicago's
clean energy goals is**

**Achieving social justice & environmental quality
through**

- **Equitable Transit-Oriented
Development (eTOD) &**
- **Cargo-Oriented Development (COD)**